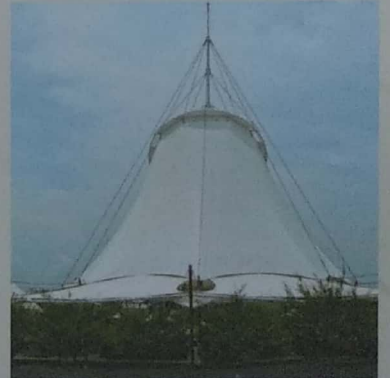




AGTex

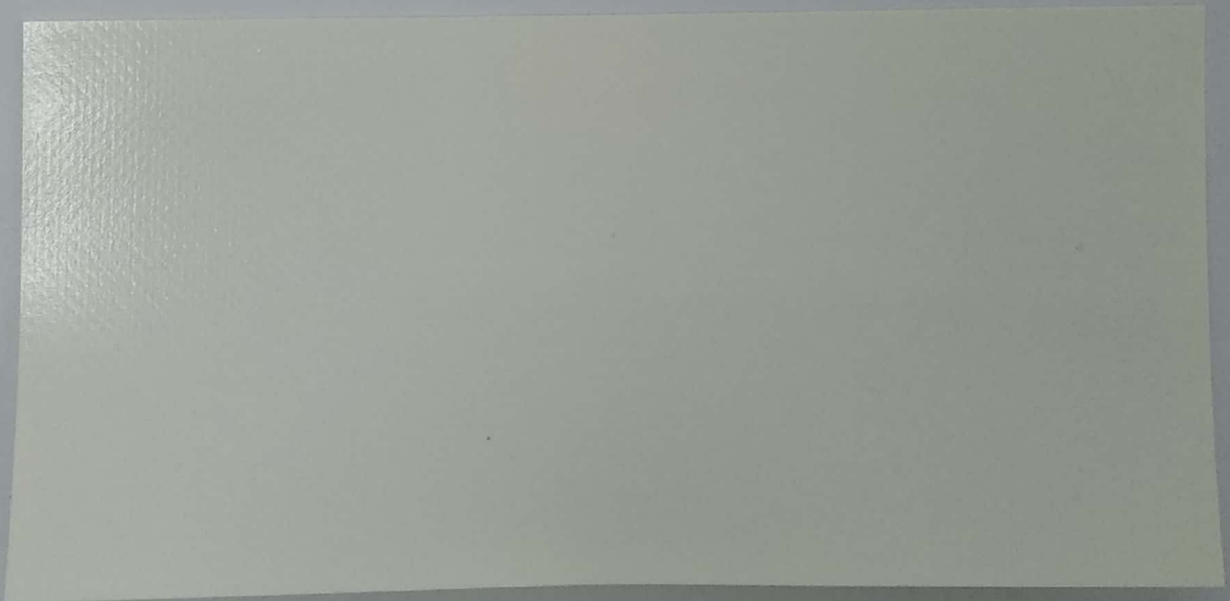
Technical Textile for
Composite Membrane

ARCHITECTURAL ROOFINGS





651P1 - 130



751P1 - 130

Colors available on 751P1:



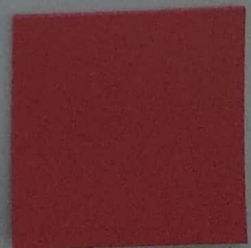
751P1 - 2302



751P1 - 1406



751P1 - 1600



751P1 - 0105



951P1

WHERE ART AND FUNCTION MEETS

AGTex coated Fabrics provide an impressive dimensional stability, tensile strength and tear strength in our product.

Applying a proprietary surface treatment generates maximum protection quality against atmospheric, chemical, microbial, fungal attacks and harsh weather, whilst being resistant to ultra violet rays, thermal damage, rain, abrasion and most importantly being flame retardant.

The performance of our coated fabrics takes the prominent space in dynamic modern lifestyle, where the endless aesthetic design and multi-functionality meets; as such stunning visual delights are created.

The optimum flexibility to any versatile complex shapes permits **AGTex** coated fabrics to vigorously adapt to state-of-the-art trends and technologies for today and tomorrow

The major advantages:

- ✓ Limitless architectural design possibility
- ✓ Low construction cost & efficiency
- ✓ Available for large size roofings & fitting
- ✓ Lightweight and flexible yet strong and durable
- ✓ Easy handling and fast installation
- ✓ Mobile, temporary and permanent basis use
- ✓ Weather and environmental friendly

CLASSIFICATION OF TECHNICAL TEXTILE APPLICATION



BUILDTECH - Construction Textiles

- I. Hanging ceiling and sunshade
- II. Portable pavilion, tent and marquee
- III. Static building roofing and facade



MOBILTECH - Transport Textiles

- I. Leisure & recreational water application
- II. Heavy vehicles top cover and side curtain
- III. Vehicles depot and aircraft hangar



AGROTECH - Agro Textiles

- I. Crop container bag and carrier
- II. Plantation and storage protection cover
- III. Soil stabilizer and irrigation liner



OEKOTECH - Environmental Protection Textiles

- I. Protection and evacuation application
- II. Ground sealing, landslide and erosion barrier
- III. Water treatment, recycling and depositing



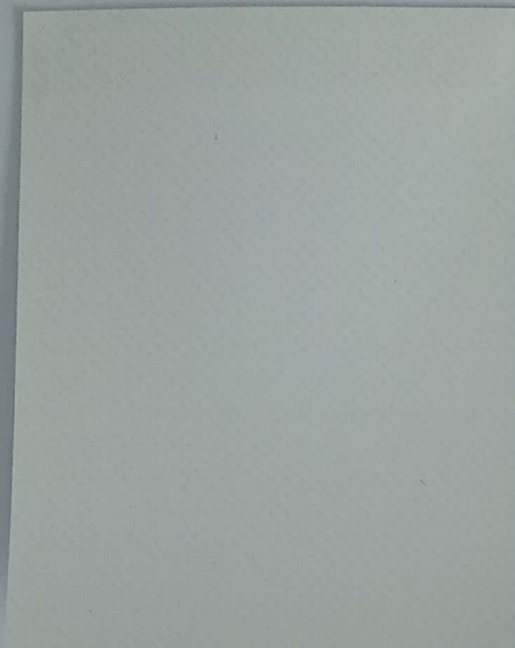
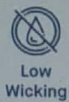
INDUTECH - Industrial Textiles

- I. Industrial general protective cover
- II. Flexible container carrier and storage
- III. Industrial clearspan building

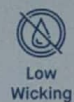
DUTY CLASSIFICATION

- I. Light | II. Medium | III. Heavy
- The application suggested here does not guarantee the particular application of the customer and it requires the customer to conduct their own comprehensive test concerning suitability of the material for its intended application

BLOCKOUT



651OP

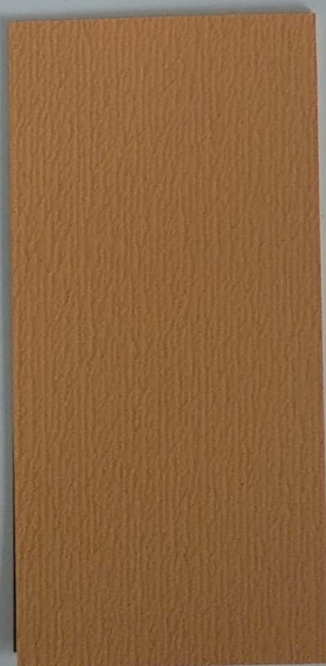


851OP1

SPECIALITIES



751P1#SLV



751P1#GLD



751P1#HTA

TECHNICAL PROPERTIES

Category	651P1	751P1	951P1	651OP	851OP1	751P1#SLV/GLD	751P1#HTA	Unit	Standard
Coating Material	PVC (Poliviny Chloride)								
Base Fabric	High Tenacity Polyester								
Yarn Size	1100	1100	1100	1100	1100	1100	1100	DTex	EN ISO 2076
Total Weight	650	750	950	650	850	750	750	gr/m2	EN ISO 2286-2
Width	250	250	250	250	250	250	250	cm	
Thickness	0.50	0.65	0.75	0.50	0.65	0.65	0.65	mm	EN ISO 2286-2
Tensile (Warp/Weft)	280/280	300/300	400/400	300/300	300/300	300/300	300/300	daN/5cm	EN ISO 1421
Tear (Warp/Weft)	28/28	30/30	50/50	30/30	30/30	30/30	30/30	daN	DIN 53363
Resistance (Cold - Heat)	-30 - +70 °C								
Adhesion (Warp/Weft)	9.5/9.5	10/10	12/12	9.5/9.5	10/10	10/10	10/10	daN/5cm	EN ISO 2411
Flame Retardancy	B1 (DIN 4101-1), B-s1, d0 (EN 13501-1), M2 (NF P 92503), B1/BS (NFPA701)								
Lacquering (Top/Bottom)	High Concentrate PVDF / Weldable PVDF			Acrylic / Acrylic		High Concentrate PVDF / Weldable PVDF			

The technical specification shown here are based on the best current available and average results from laboratory testing with at ±15% tolerance and provided as a source of information only and do not constitute any agreement concerning the good's warranty and refers to the goods supplied in original state without any processing done by the customer/ The data above are entitled to be modified due to technical progress without prior notice and the customer is fully responsible to check and validity of the above data prior to use.

The specification suggested here does not guarantee the particular application of the customer and it requires the customer to conduct their own comprehensive test concerning suitability of the material for its intended application.



1. Base Fabrics
2. Primary Coating
3. Top Coating
4. Surface Treatment (Lacquering)

COMPOSITE MEMBRANE

Base Fabrics

A woven Base Fabrics of high tenacity polyester yarns is the base material to provide Tear strength, Tensile strength and Dimensional stability on finished product.

Primary & Top Coating

The primarily PVC coating impregnate the base Cloth to enhance the impressive Dimensional stability, high Tensile strength and high Elongation rupture.

Surface Treatment (Lacquering)

Applying the lacquer on the surface generates the maximum protection quality against atmospheric chemical, microbial and fungal attacks, weather and environment friendly resistance to Ultra Violet Thermal, Rain, Abrasion and Flame Retardant.

AGTex Coating process

AGTex products line are created by an integrated European coating technology combined with supreme technical expertise.

The liquid form coating which primary consists of PVC ensures the stabilization of the pre-stressed base cloth, filling the air pocket within and bridging interstices to cover the surface and generate the impressive durability, tensile and tear strength of the product.

The high performance quality and longevity of our products provides low construction cost, shorter installation time and easy maintenance, enabling AGTex product lines with the ability to provide a wide variety of dramatic functions that fits every sophisticated lifestyle.

WARRANTY

Product
751P1#HTA,
651OP

5 YEAR
WARRANTY

Product
651 P1

6 YEAR
WARRANTY

Product
751 P1,
751P1#SLV,
851 OP1

7 YEAR
WARRANTY

Product
951 P1

9 YEAR
WARRANTY

* terms & conditions applies

HIDDEN STRENGTH

STABILITY

DURABILITY

TENSILE
STRENGTH

TEAR
STRENGTH

KEY ADVANTAGES



FLEXIBILITY



LONGEVITY



RESISTANCE



THERMAL
COMFORT



MOULD
RESISTANCE



WATERPROOF



COST EFFICIENCY



EASY
MAINTENANCE



PRINTABLE



WARRANTY



FLAME
RETARDANT



ENVIRONMENTAL
FRIENDLY

TAKE THE
60 - SECONDS
TOUR

AGTex, stands for the best in Coating Technologies for Technical Textiles

PT ATEJA GRACE TEXINDO is a pioneer in coating technologies for the technical textile industry of Indonesia, established in 2014 launching their Composite Membrane under the registered trade mark **AGTex**.

The affiliation with the Ateja group as one of the international leading companies which has grown over four decades whilst creating textiles range from the conventional to the technical through a vertical integrated production line, creates another important milestone in our history with **AGTex** products.

The state-of-the-art European technology provided by both foreign and domestic professional experts, integrated with the comprehensive know-how that exists within the Ateja group, which is our priceless asset, renders **AGTex** to produce a coating technology for technical textiles of paramount quality that is able to vigorously adapt to the latest trends and innovations of today and tomorrow.

CONTACT US

ATEJA



ISO 9001

ATEJA GRACE TEXINDO, PT

Jl. Raya Batujajar Km 3 No. 330 Padalarang 40561,
Bandung - Jawa Barat, Indonesia
Phone : 62.22.6866028 Fax : 62.22.6866029
E-mail : agtex@agtex.co.id Website : www.agtex.co.id